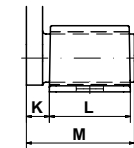
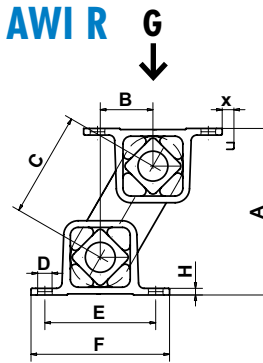


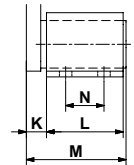
# Anti-vibration Mounts Type AWI



Type AWI R

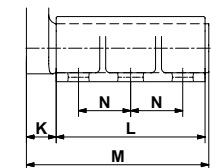
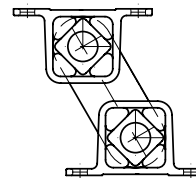


size 15 to 27



size 38 to 50

Type AWI L



size 50-2

| Art. No.   | Type      | Load capacity<br>Gmin. – Gmax.<br>[N] | A<br>un-<br>loaded | A*<br>max.<br>load | B    | C   | D     | E   | F   | H   | K  | L   | M   | N  | Weight<br>[kg] |
|------------|-----------|---------------------------------------|--------------------|--------------------|------|-----|-------|-----|-----|-----|----|-----|-----|----|----------------|
| 05 111 101 | AWI 15R   | 180 – 400                             | 68                 | 55                 | 22.5 | 45  | 7x10  | 50  | 65  | 3   | 10 | 40  | 52  | -  | 0.2            |
| 05 121 101 | AWI 15L   |                                       |                    |                    |      |     |       |     |     |     |    |     |     |    |                |
| 05 111 102 | AWI 18R   | 350 – 850                             | 88                 | 70                 | 30   | 60  | 9x15  | 60  | 80  | 3.5 | 14 | 50  | 67  | -  | 0.9            |
| 05 121 102 | AWI 18L   |                                       |                    |                    |      |     |       |     |     |     |    |     |     |    |                |
| 05 111 103 | AWI 27R   | 650 – 1'500                           | 111                | 91                 | 35   | 70  | 11x20 | 80  | 105 | 4.5 | 17 | 60  | 80  | -  | 1.9            |
| 05 121 103 | AWI 27L   |                                       |                    |                    |      |     |       |     |     |     |    |     |     |    |                |
| 05 111 104 | AWI 38R   | 1'200 – 3'000                         | 150                | 122                | 47.5 | 95  | 13x20 | 100 | 125 | 6   | 21 | 80  | 104 | 40 | 4.5            |
| 05 121 104 | AWI 38L   |                                       |                    |                    |      |     |       |     |     |     |    |     |     |    |                |
| 05 111 105 | AWI 45R   | 2'000 – 4'800                         | 177                | 145                | 55   | 110 | 13x26 | 115 | 145 | 8   | 28 | 100 | 132 | 58 | 7.8            |
| 05 121 105 | AWI 45L   |                                       |                    |                    |      |     |       |     |     |     |    |     |     |    |                |
| 05 111 106 | AWI 50R   | 4'000 – 9'600                         | 194                | 159                | 60   | 120 | 17x27 | 130 | 170 | 12  | 40 | 120 | 165 | 60 | 12.8           |
| 05 121 106 | AWI 50L   |                                       |                    |                    |      |     |       |     |     |     |    |     |     |    |                |
| 05 111 108 | AWI 50-2R | 6'600 – 16'000                        | 194                | 159                | 60   | 120 | 17x27 | 130 | 170 | 12  | 45 | 200 | 250 | 70 | 20.3           |
| 05 121 108 | AWI 50-2L |                                       |                    |                    |      |     |       |     |     |     |    |     |     |    |                |

| Art. No.   | Type      | Natural frequency<br>Gmin. – Gmax.<br>[Hz] | x<br>max. | Material<br>structure                                  |
|------------|-----------|--|-----------|--|
| 05 111 101 | AWI 15R   | 7.2 – 4.5                                  | 14        | Stainless<br>steel casting<br>GX5CrNi19-10<br>(1.4308) |
| 05 121 101 | AWI 15L   |  |           |  |
| 05 111 102 | AWI 18R   | 6.5 – 3.7                                  | 19        |  |
| 05 121 102 | AWI 18L   |  |           |  |
| 05 111 103 | AWI 27R   | 6.0 – 3.7                                  | 22        |  |
| 05 121 103 | AWI 27L   |  |           |  |
| 05 111 104 | AWI 38R   | 5.2 – 3.2                                  | 31        |  |
| 05 121 104 | AWI 38L   |  |           |  |
| 05 111 105 | AWI 45R   | 5.0 – 2.8                                  | 35        |  |
| 05 121 105 | AWI 45L   |  |           |  |
| 05 111 106 | AWI 50R   | 4.8 – 2.8                                  | 38        |  |
| 05 121 106 | AWI 50L   |  |           |  |
| 05 111 108 | AWI 50-2R | 4.8 – 2.8                                  | 38        |  |
| 05 121 108 | AWI 50-2L |  |           |  |

The elements can be combined with one another (identical heights and operation behaviour)

\* compression load Gmax. and final cold flow compensation (after approx. 1 year).

Type AWI R



Type AWI L

